

CONVERSION MODULE Z-WAVE



ZWMA4



SAFETY RULES	3
CONTROL – DIGITAL INPUTS	3
CONTROL – MODULE	4
QUICK START	5
ASSIGN ZWMA4 AS SECONDARY	6
ADD TO NETWORK	6
ADD TO GROUP	7
REMOVE FROM NETWORK	7
REMOVE FROM GROUP	8
RESET MODULE	8
ADDITIONAL INFORMATION	9
PROBLEMS	9
MODULE INSTALLATION	10
WARRANTY	11



Dear Sir/Madam! Thank you for purchasing FAKRO product. We do hope that it will meet your expectations. To ensure appropriate functioning of the product, please peruse this User Manual.

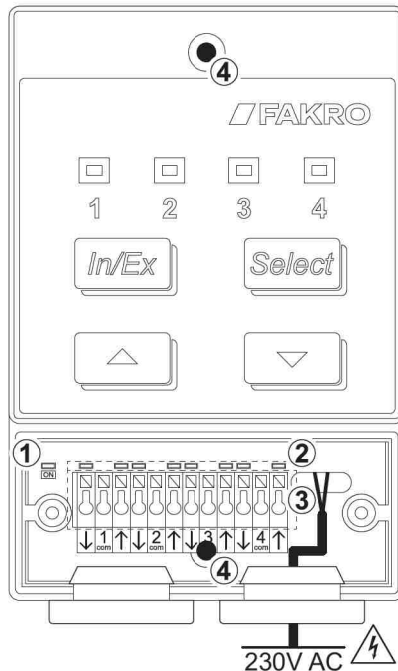
MODULE DESCRIPTION

The ZWMA4 module is designed to control devices compatible with the Z-Wave standard. Thanks to potential-less inputs the module is the so called gate to the Z Wave system for other external devices, e.g. wall switch, thermostat, timer switch, EIB / KNX system. The module can support up to 231 devices which can be assigned to max. 4 groups. The ZWMA4 module can act as PRIMARY and SECONDARY controller.

i **PRIMARY controller** – used to operate devices. It can change network settings as well as add and remove devices. Only one PRIMARY controller can be in one Z-Wave network.

i **SECONDARY controller** – used only to operate devices. Many SECONDARY controllers can be in one Z-Wave network.

ZWMA4 MODULE STRUCTURE		TECHNICAL SPECIFICATION	
1,2,3,4	Signalling LEDs	Power supply: 230V AC	Radio protocol: Z-Wave
In/Ex	Programming button		
Select	Group change button	Operating range: Up to 20m in the building	Frequency: EU – 868,4 MHz; AS/NZ - 921,42 MHz; US/Canada – 908,4 MHz;
▲	Control button OPEN		
▼	Control button CLOSE	Working temperature: 5 - 40°C	RUJ - 869 MHz (depending on version)
①	Module power supply signalling		
②	Potential-less inputs signalling	Dimensions: 120/80/36 mm	
③	Four double potential-less inputs		
④	Mounting holders		



SAFETY RULES

When installing the ZWMA4 module it is required to observe the following recommendations:

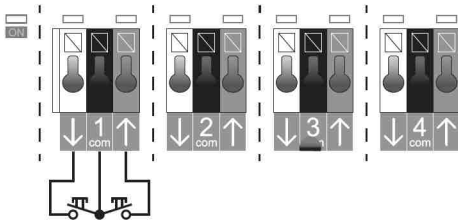
- Installation should be carried out in accordance with manufacturer's instructions.
- Connecting the module should always be performed with the supply voltage disconnected.
- After unpacking, check the module elements for any signs of mechanical damage.
- Before connecting the module, make sure that the power supply corresponds with module voltage specified on the data plate.
- Plastic containers used for packing should be stored out of children reach as they may be a potential source of danger.
- The ZWMA4 module should be used according to its intended design. FAKRO shall not be responsible for any consequences being the result of improper module use.
- Any activities related to cleaning, adjustment or dismantling the module should be preceded with disconnecting it from the power supply.
- The module must not be washed using solvent-based substances or open stream of water (do not immerse in water).
- Any repairs of the module should be carried out by service authorised by the manufacturer.
- Safe length of wires connected to the connector is 5m. It is allowed to use longer wires, but one must make sure that interference does not adversely affect work of the ZWMA4 module
- The ZWMA4 weather module is designed for installation inside the room.



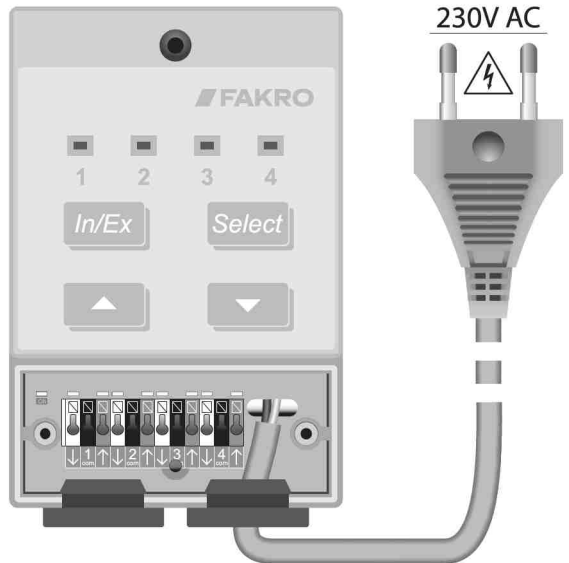
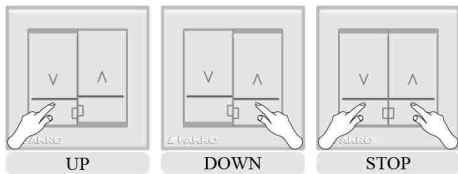
The module is powered by hazardous voltage 230V AC!

CONTROL – DIGITAL INPUTS

The module comes with four double potential-less inputs (digital) marked with numbers 1, 2, 3, 4. Cables connected to these inputs must have the area of 0.25mm² and provide potential-less signal. The ZWMA4 module is powered by 230V AC! Wiring diagram below.




Short circuit of inputs DOWN/COM – CLOSURE
 Short circuit of inputs UP/COM – OPENING
 Short circuit of all inputs – STOP



Terminals are covered with a safety cover fixed by means of two screws.

CONTROL – MODULE

The module can control devices in BASIC MODE (default) or EXTENDED. Change of the control mode applies only to potential-less inputs. Module control buttons always work in EXTENDED MODE.



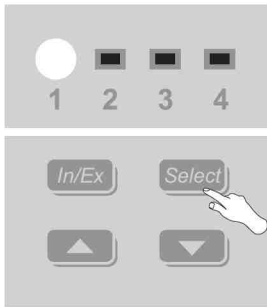
CHANGING CONTROL MODES – Within 2 seconds press In/Ex button 5 times. Change of the mode will be signalled by all LEDs blinking 3 times.

BASIC

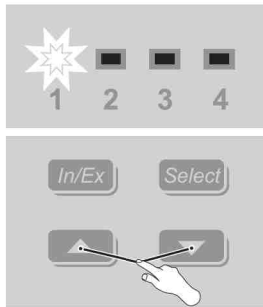
- i** SHORT press of control button (shorter than 0.5 sec.) causes the action to reach end position.
- i** SIMULTANEOUS press of control buttons stops the action.

EXTENDED

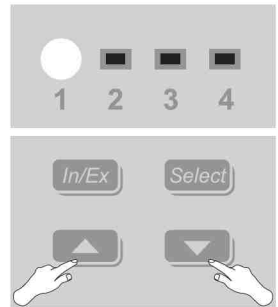
- i** LONG press of control button (longer than 0.5 sec.) causes the action until releasing the button.



GROUP SELECTION
Select button



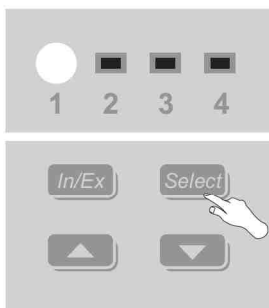
CONTROL
UP or DOWN buttons.



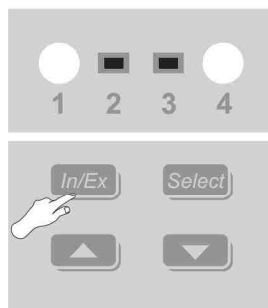
STOP
UP and DOWN buttons.

QUICK START

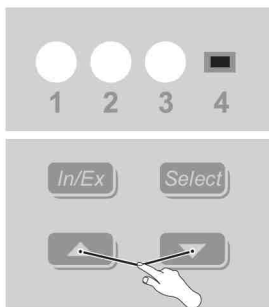
This function allows you to add the device to the Z-Wave network, while assigning it to selected group.



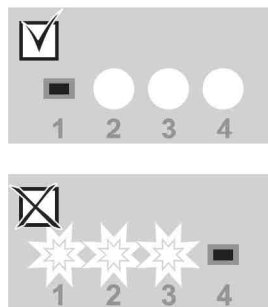
Using Select button choose group (1 or 2 or 3 or 4) to which you want to assign the device.



Press In/Ex button. Wait until LEDs are on.



Select any control button. Then, within 10 sec. press programming button*.



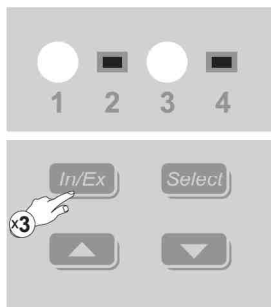
Programming result. In case of error, repeat the procedure or see page 9, section 1 or 3.



* Programming mode is carried out by pressing programming button on the device being added / reset. FAKRO products come with programming buttons marked with "P".

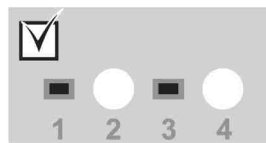
ASSIGN ZWMA4 AS SECONDARY

By adding another controller to the Z-Wave network, the same devices can be controlled by means of different controllers. Controllers can be of any type. Devices must be added to selected group (page 7) in order to be controlled by SECONDARY module.



Within 1 second press In/Ex button 3 times.

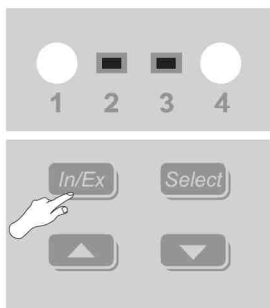
Within 10 seconds run on PRIMARY controller ADD TO NETWORK function. The ZWMA4 module – page 6. Another type of controller – see its user manual.



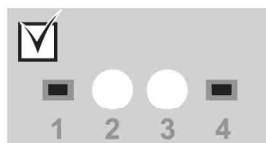
Programming result. In case of error, repeat the procedure or see page 9, section 2.

ADD TO NETWORK

This function allows to add devices to the Z-Wave network without adding them to the group. Once this procedure is completed, go to ADD TO GROUP (page 7). Using ADD TO NETWORK function another SECONDARY controllers can be added.



Press IN/EX button. Then, within 10 sec. press programming button*.



Programming result. In case of error, repeat the procedure or see page 9, section 1.

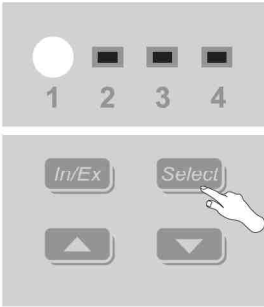
If you add another controller instead of the device, run on it ASSIGN CONTROLLER AS SECONDARY function. ZWMA4 module – page 6. Another type of controller – see its user manual.



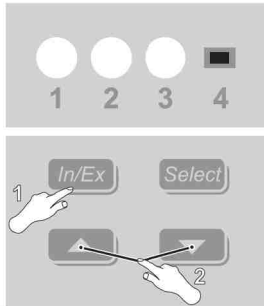
* Programming mode is carried out by pressing programming button on the device being added / reset. FAKRO products come with programming buttons marked with "P".

ADD TO GROUP

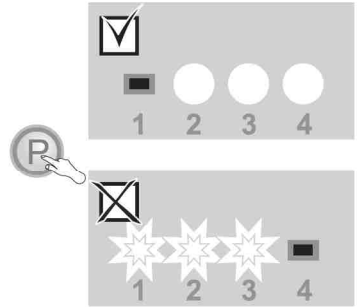
The procedure allows to add the device to selected group. Only those devices can be added to the group which have already been added to the Z-Wave network.



Using Select button choose the group (1 or 2 or 3 or 4) to which the device is to be assigned.



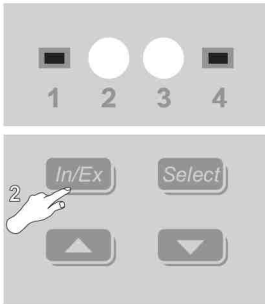
Within 1 second press In/Ex button and then any control button. Then, within 10 sec. press programming button*.



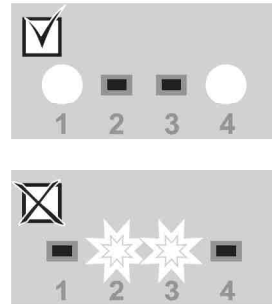
Programming result. In case of error, repeat the procedure or see page 9, section 3.

REMOVE FROM NETWORK

Devices can be removed from the Z-Wave network using PRIMARY controllers.



Press IN/EX button 2 times. Then, within 10 sec. press programming button*.



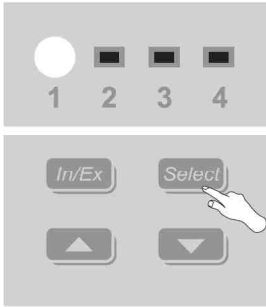
Programming result. In case of error, repeat the procedure or see page 9, section 4.



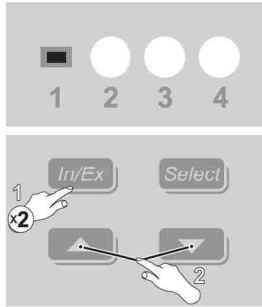
* Programming mode is carried out by pressing programming button on the device being added / reset. FAKRO products come with programming buttons marked with "P".

REMOVE FROM GROUP

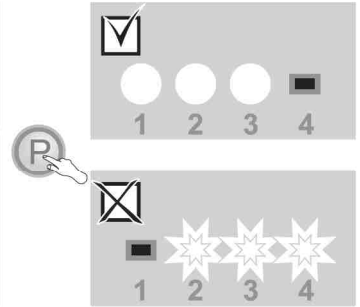
This function allows to remove devices from the group without removing them from the Z-Wave network. The device can be added again to the group of any controller, which is in the same Z-Wave network.



Using Select button choose the group (1 or 2 or 3 or 4) from which the device is to be removed.



Within 1 second press In/Ex button 2 times and then any control button. Then, within 10 sec. press programming button*.

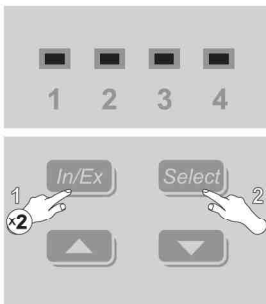


Programming result. In case of error, repeat the procedure or see page 9, section 4.

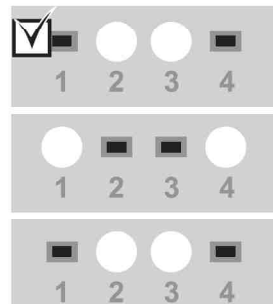
RESET MODULE

PRIMARY MODULE RESET – all information in the module is removed. Devices can be controlled again only after carrying out the procedure: REMOVE FROM NETWORK (page 7) and QUICK START (page 5).

SECONDARY MODULE RESET – all information in the module is removed. Devices can be controlled again only after carrying out the procedure: ASSIGN ZWMA4 MODULE AS SECONDARY (page 6) and ADD TO GROUP (page 7).



Within 1 second press In/Ex button 2 times and then press Select button.



After a short while, the module will signal success of the procedure by LED's being alternately on.



* Programming mode is carried out by pressing programming button on the device being added / reset. FAKRO products come with programming buttons marked with "P".

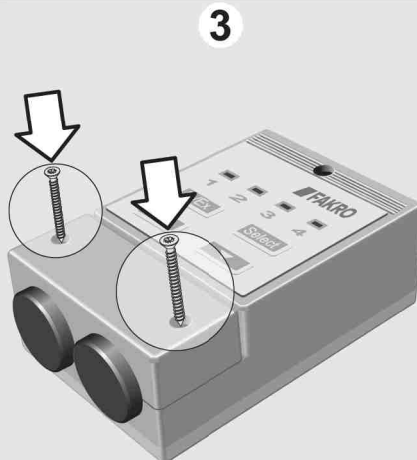
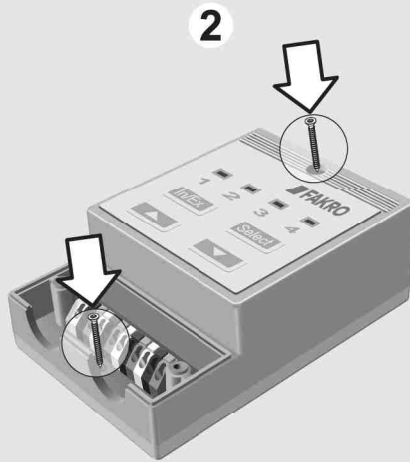
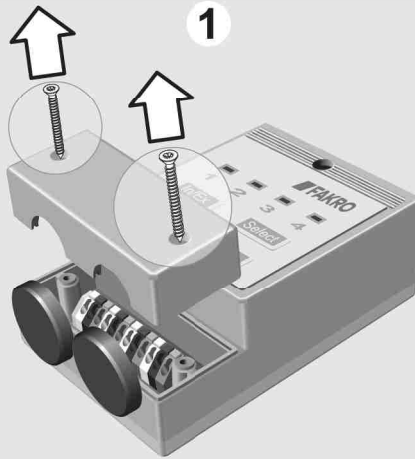
ADDITIONAL INFORMATION

Each device physically removed from the network (e.g. damaged) must be removed from the controller's memory. This action allows to reduce reaction time and extend the working time of mobile controllers. If it is not possible to remove damaged device from the controller's memory, it is advisable to reset the entire Z-Wave network (removing all devices) and re-create it.

PROBLEMS

CAUSE	SOLUTION
1. Device cannot be added to Z-Wave network by means of ZWMA4.	
Device is added to other Z-Wave network.	REMOVING FROM NETWORK (page 7)
Programming button is not pressed.	Press programming button for 2 seconds.
Too long waiting time for pressing programming button on the device.	Press programming button in time no longer than 10 seconds.
2. ZWMA4 module cannot be added as SECONDARY.	
Too long waiting time for running ADD DEVICE function on PRIMARY controller.	Run ADD DEVICE function of PRIMARY controller for no longer than 10 seconds.
3. Device cannot be added to selected group.	
Programming button is not pressed.	Press programming button for 2 seconds.
Too long waiting time for pressing programming button on the device.	Press programming button in time no longer than 10 seconds.
4. Device cannot be removed from group or Z-Wave network.	
Programming button is not pressed.	Press programming button for 2 seconds.
Too long waiting time for pressing programming button on the device.	Press programming button in time no longer than 10 seconds.
5. Device cannot be controlled.	
No power supply.	Check whether the device you want to control is correctly connected to the source of power. This can be done by using manual control button.
Too big distance between devices. Possible obstacles restricting the reach (e.g. Module situated in metal wardrobe).	Try to change the location of ZWMA4 module.

MODULE INSTALLATION



WARRANTY

The manufacturer guarantees correct device functioning. It also undertakes to repair or replace faulty device if damage is a result of material or structural faults. The warranty period is 24 months from the date of purchase, fulfilling the following conditions:

- Installation has been performed as per manufacturer recommendations.
- Seals remain intact and no authorised structural changes have been made.
- The device has been used in accordance with its intended use as per user manual.
- Damage is not a result of improperly made electrical system or atmospheric phenomena.
- The manufacturer is not liable for damage which occurred as a result of improper use or mechanical damage.

In case of failure, the device must be submitted for repair with a Warranty Card. Defects revealed within the warranty period will be removed free of charge no longer than 14 days after accepting the product for repair. Warranty and post-warranty repairs are performed by the manufacturer i.e. FAKRO PP. Sp. z o.o.

FAKRO Sp. z o.o.

Ul. Węgierska 144A, 33-300 Nowy Sącz
Polska
www.fakro.com
tel.+ 48 18 444 0 444, fax. +48 18 444 0 333

Quality certificate:

Device

Model

Serial number

Seller

Address

Purchase date

Invoice No.

Signature (stamp) of person installing a device

